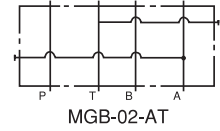
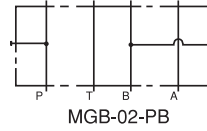
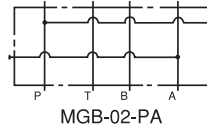


MODÜLER BAĞLANTI BLOKLARI/ MODULAR CONNECTING BLOCKS MGB - 02



SEMBOLLER / SYMBOLS



TEKNİK BİLGİ / TECHNICAL DATA

MAKSİMUM ÇALIŞMA BASINCI MAX. OPERATING PRESSURE KGF/CM ² (PSI)	MAKSİMUM DEBİ MAX. FLOW LPM/GPM	AĞIRLIK WEIGHT KGS
250 (3600)	40 (10.6)	1.1 KGS

İŞLEVİ / FUNCTION

* MODÜLER BAĞLANTI BLOKLARINDA HAT BASINCI MANOMETRE BAĞLANMAK SURETİYLE KONTROL EDİLEBİLİR.
* THE MODULAR CONNECTING BLOCKS ARE USED FOR CHECKING THE PORT PRESSURES, CAN BE CONNECTED WITH PRESSURE GAUGES.

SİPARİŞ KODU / ORDERING CODE

MGB -- 02 -- PA -- 50

DİZAYN NUMARASI / DESIGN NUMBER

İŞ YAPACAK DELİKLER / FONCTION PORT:

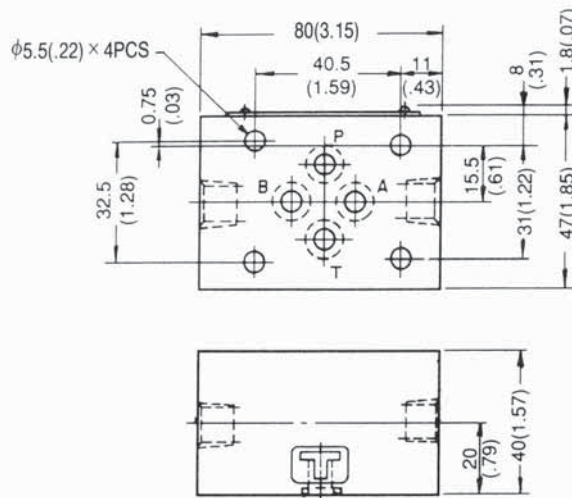
PA: P,A DELİĞİ / P,A PORT

PB: P,B DELİĞİ / P,B PORT

AT: A,T DELİĞİ / A,T PORT

DELİK ÖLÇÜSÜ / PORT SIZE
02: 1/4"

ÖLÇÜLER / DIMENSIONS

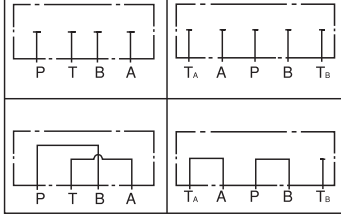


BİRİM / UNITS : MM (INCH)
AĞIRLIK / WEIGHT : 1.15 KGS

MODÜLER BLOKLAR / MODULAR BLOCKS

MDC - 03

SEMBOLLER / SYMBOLS



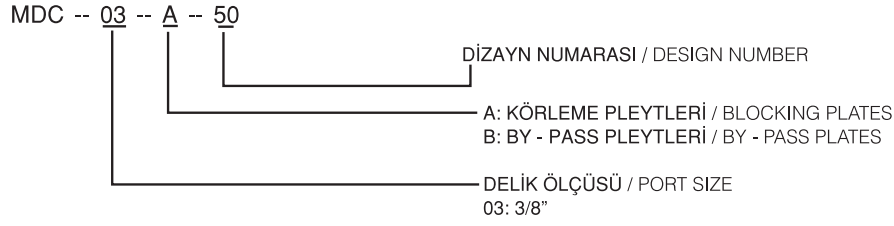
TEKNİK ÖZELLİKLER / TECHNICAL DATA

MAKSİMUM ÇALIŞMA BASINCI MAX. OPERATING PRESSURE KGF/CM ² (PSI)	MAKSİMUM DEBİ MAX. FLOW LPM/GPM	AĞIRLIK WEIGHT KGS
250 (3600)	70 (18.5)	2.5 KGS

İŞLEVİ / FUNCTION

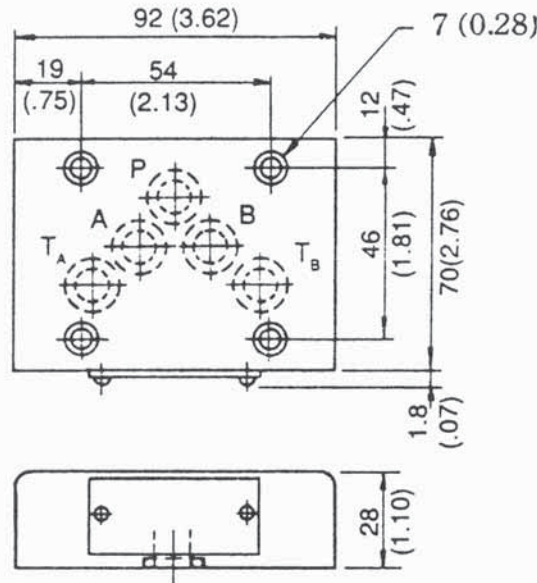
- * KÖRLEME PLEYTLERİ PLEYT MONTAJINA YARDIMCI OLUR VE GEREKSİZ DEVRELERİ KAPATIR.
- * BY - PASS PLEYTLERİ, SELENOİD YÖN VALFİ GEREKTİRMEYEN TEK YÖNLÜ DEVRE İÇİN KULLANILIR.
- * THE BLOCKING PLATES HELP PLATE - INSTALLATION AND CLOSE USELESS CIRCUIT.
- * THE BY - PASS PLATES ARE USED FOR SINGLE DIRECTION CIRCUIT WHICH NEED NO SOLENOID CONTROLLED DIRECTIONAL VALVES.

SİPARİŞ KODU / ORDERING CODE



ÖLÇÜLER / DIMENSIONS

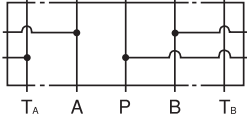
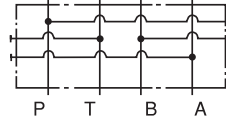
MDC - 03



BİRİM / UNIT: MM (INCH)
AĞIRLIK / WEIGHT: 2.5 KGS

MODÜLAR BAĞLANTI BLOKLARI / MODULAR GAUGE BLOCKS MGB - 03

SEMBOLLER / SYMBOLS



TEKNİK ÖZELLİKLER / TECHNICAL DATA

MAKSİMUM ÇALIŞMA BASINCI MAX. OPERATING PRESSURE KGF/CM ² (PSI)	MASİMUM DEBİ MAX. FLOW LPM/GPM	AĞIRLIK WEIGHT KGS
250 (3600)	70 (18.6)	2.5 KGS

İŞLEVİ / FUNCTION

* MODÜLER BAĞLANAN BLOKLAR ÜZERİNE MANOMETRE BAĞLANARAK BASINCIN KONTROLÜNDE KULLANILIR.
* THE MODULAR CONNECTING BLOCKS ARE USED FOR CHECKING THE PORT PRESSURES, CAN BE CONNECTED WITH PRESSURE GAUGES.

SİPARİŞ KODU / ORDERING CODE

MGB -- 03 -- A -- 50

DİZAYN NUMARASI / DESIGN NUMBER

İŞ YAPACAK DELİKLER / FUNCTION PORT:

PA: P, A DELİĞİ / P,A PORT

PB: P,B DELİĞİ / P,B PORT

AT: A,T DELİĞİ / A,T PORT

DELİK ÖLÇÜSÜ / PORT SIZE
03: 3/8"

ÖLÇÜLER / DIMENSIONS

MGB - 03

BİRİM / UNIT: MM (INCH)
AĞIRLIK / WEIGHT: 2.5 KGS

